



**Disadvantaged, Marginalised and Vulnerable groups
How has the mental health of children & young people
living in different circumstances changed due to
COVID-19?**



Exceptional Education at the Heart of the Community

Oasis Community Learning





Exceptional Education at the Heart of the Community

Oasis is family of charities that now works in ten countries across five continents, providing:

- Education
- Health care
- Housing
- Youth services
- Community services
- Secure Schools





52 Academies (54 by Sept 2022)

31,400 pupils

47% disadvantaged pupils

43% pupils from ethnic minorities

33% speak EAL

14% SEND

84% mobility

5000+ Staff



52 Academies (54 by Sept 2022)

31,400 pupils

47% disadvantaged pupils


43% pupils from ethnic minorities

33% speak EAL

14% SEND

84% mobility

5000+ Staff

- 
- A large, dark silhouette of a tree with a wide canopy and a thick trunk. The trunk is positioned centrally, and a dark blue rectangular box is superimposed over it, containing a list of five bullet points. The roots of the tree are visible at the bottom, spreading outwards.
- A passion to include everyone
 - A desire to treat everyone equally, respecting differences
 - A commitment to healthy and open relationships
 - A deep sense of hope that things can change and be transformed
 - A sense of perseverance to keep going for the long haul

ETHOS



**“EXCEPTIONAL EDUCATION AT THE
HEART OF OUR COMMUNITIES”**





It is personal ...

Two facts...

Who are you?

Who are you becoming?



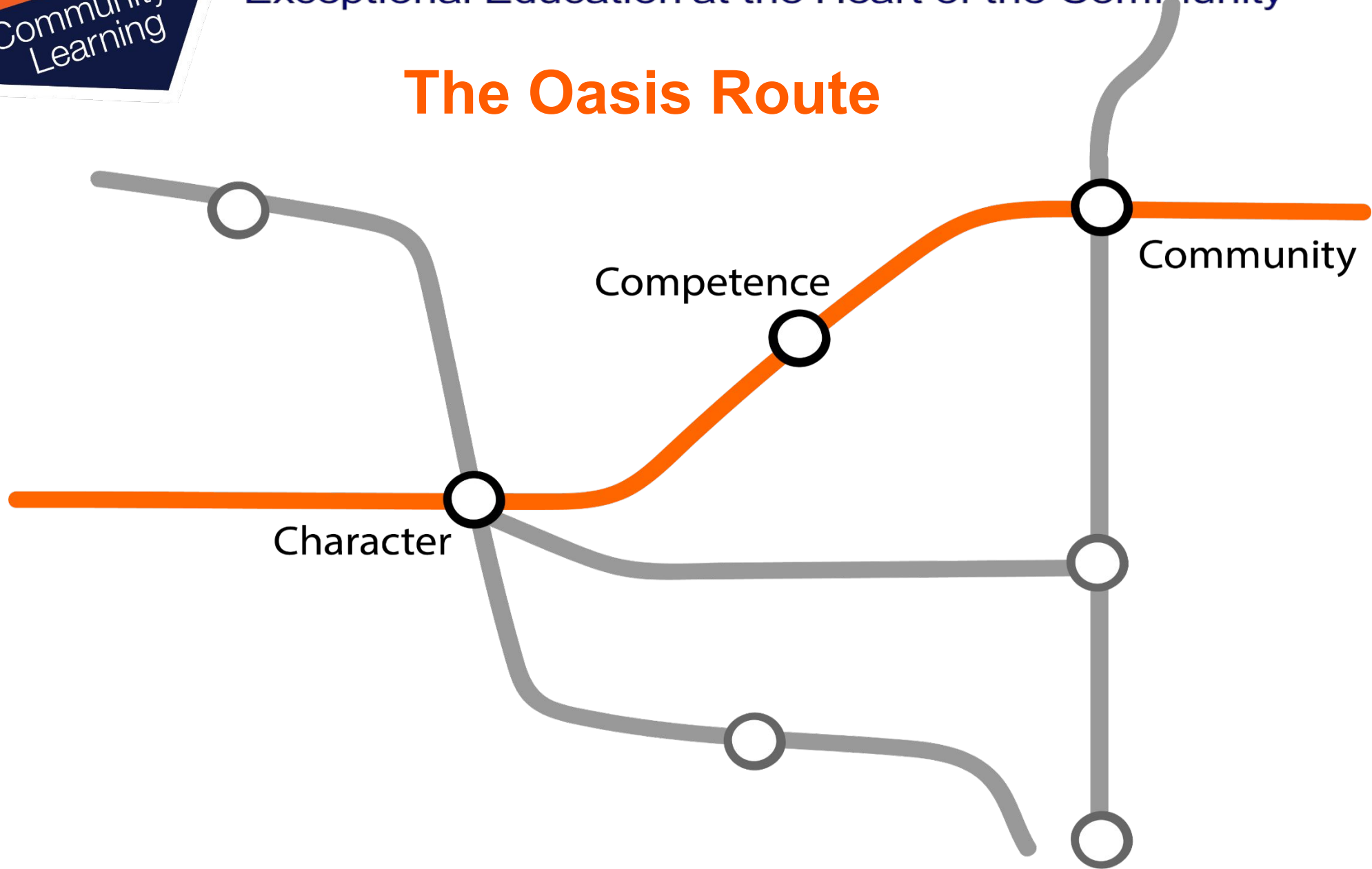
The Ripple Effect





Exceptional Education at the Heart of the Community

The Oasis Route





Exceptional Education at the Heart of the Community



What has been like in our field of work?

- Loss of teaching and learning time
- Leading schools in a new way – staggered starts and Covid controls
- Staff illness and consistent disruption to students learning
- 6500 students isolating whilst affecting 10% of our work force
- The challenge setting up remote learning
- Children lost to the system
- Increased safeguarding and very vulnerable families
- The immediate daily decision making
- Interpreting the latest DfE guidance
- Constant uncertainty over Ofsted and Test/exams taking place
- It has laid bare the **inequity our families' experience**



Exceptional Education at the Heart of the Community

What has been the impact on our young people?

- Loss of social interaction
- Loss of structure and routine
- Loss of friendships
- Loss of learning time
- Loss of opportunity
- Perhaps Loss of someone close even
- Heightened anxiety, low self esteem, attention difficulties

So this makes the work we do now even more important and more precious because we have learnt about how covid has affected and uncovered the real inequity in society and how are disadvantaged young people are more likely to be a higher detriment



Exceptional Education at the Heart of the Community

The Real Challenges

- Food poverty – from 793 in July 2020 to 1900 in February 2021 identified with food vulnerability
- Heightened safety concerns with now over 6023 vulnerable children (20%)
- Loss of nurture and relationships with key adults
- Increased levels of trauma and abuse
- Lost learning time
- Online Connectivity is limited with 30% of students with no access
- Disadvantaged gap widening
- Recession with high levels of unemployment likely with a very competitive work environment going forward



Exceptional Education at the Heart of the Community



What has it tested?

A test of how much we care

A test of our character

A test of our resilience

A test for us of what really matters

A test for how we can learn to do things differently

A test of how much education really matters to our students

A test of how much we matter to our local communities and what our communities mean to us

What does the future hold?

A more inclusive
school culture and
ethos

Developing a
curriculum that
really matters

A team around
each academy
and community

More creative
interactive
teaching practices

Space to engage
with student and
staff voice

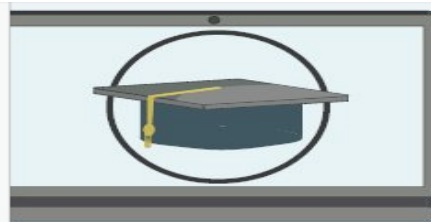
Stronger
partnerships with
our communities



Exceptional Education at the Heart of the Community

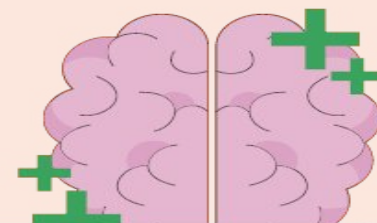
As part of our holistic offer, each academy will offer the following to every student:

Reading strategies to endeavour that every student becomes a fluent reader



Access to online learning

Access to high-quality mental health support



The opportunity to be a student leader or mentor



The opportunity to be part of a school production



The opportunity to be part of a school team



The opportunity to play a musical instrument



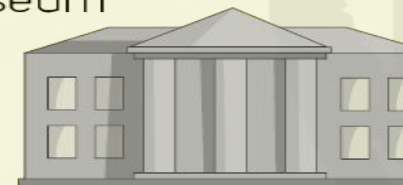
The opportunity to play an active part in a Hub project



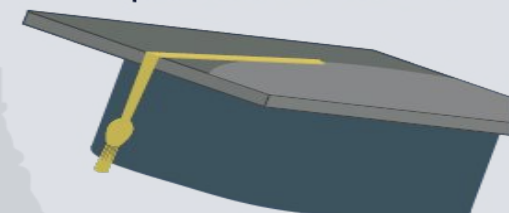
The opportunity to attend a residential trip



The opportunity to visit the theatre, an art gallery and a Museum



The opportunity to visit universities & places of work





**“EXCEPTIONAL EDUCATION AT THE
HEART OF OUR COMMUNITIES”**

